

The Parish of Our Lady & St Therese Memorial Garden



St Therese's Church
The Parish of Our Lady & St Therese
48a Lincoln Road
Essendon VIC 3040

web: www.essendoncatholic.org.au
email: essendon@cam.org.au
tel: (03) 9401 6330

St Therese's Church Memorial and Precious Angels Garden was established in 2011 when the parish of St Therese's created the garden spaces to allow the opportunity for committed parishioners in our community to remember their deceased loved ones, by interment or memorial plaque.

Today the garden is available to all active/involved parishioners of The Parish of Our Lady and St Therese, Essendon.

People living within our parish boundaries who are not involved in the parish may make use of our Memorial Garden with an in-ground interment and/or memorial plaque at the discretion of the parish priest. As the garden was established primarily for use by parishioners, it may not always be possible to approve purchase by persons who have no involvement with the parish.

COLUMBARIUMS

The Memorial Garden has four Columbariums in total with only two having urns available for purchase.

Columbarium 1: *Tobin Brothers (urns still available)*

Columbarium 3: *St Therese's School Community (urns still available)*

Columbarium 2: *Lisieux (no longer available for purchase)*

Columbarium 4: *Noel O'Brien and Family (no longer available for purchase)*

There are fourteen separate urns built into each Columbarium structure and each of these urns can accommodate the interment of the cremated remains of up to three persons. It is, however, more usual for two interments per urn as there is only space on each urn for the installation of two plaques.

Pre-purchase cost:

Columbarium Urn	\$1400.00
-----------------	-----------

Interment costs:

Bronze cast plaque on Columbarium per interment	\$ 350.00
---	-----------

Maintenance fee per interment	\$300.00
-------------------------------	----------

Prayer service offering per interment	\$300.00
---------------------------------------	----------

Please Note: Columbariums are available for purchase by genuine participating parishioners only.

Columbariums are to be purchased exclusively for the interment of the cremated remains of deceased parishioners.

Columbariums may not be purchased by participating parishioners for the interment of the cremated remains of any person who does not meet the criteria of participating parishioner as outlined in the Terms & Conditions.

IN-GROUND INTERMENT

In-ground interment is available for the interment of cremated remains of any person residing in our parish at the time of their death.

Plots may be pre-purchased by residents of the parish and reserved for future use.

Each plot is for one interment only.

Pre-purchase cost:

Purchase of plot	\$ 400.00
------------------	-----------

Interment costs:

Bronze cast plaque on Memorial wall*	\$ 400.00
--------------------------------------	-----------

Maintenance fee per interment	\$300.00
-------------------------------	----------

Prayer service offering per interment	\$300.00
---------------------------------------	----------

* It is possible to inter cremated remains in the garden without purchase and installation of a plaque for the Memorial Wall.

BRONZE PLAQUES FOR MEMORIAL WALL

A plaque may be purchased and installed on the Memorial Wall without interment of cremated remains in the garden.

Bronze plaque for Memorial Wall	\$ 400.00
---------------------------------	-----------

PRECIOUS ANGELS GARDEN

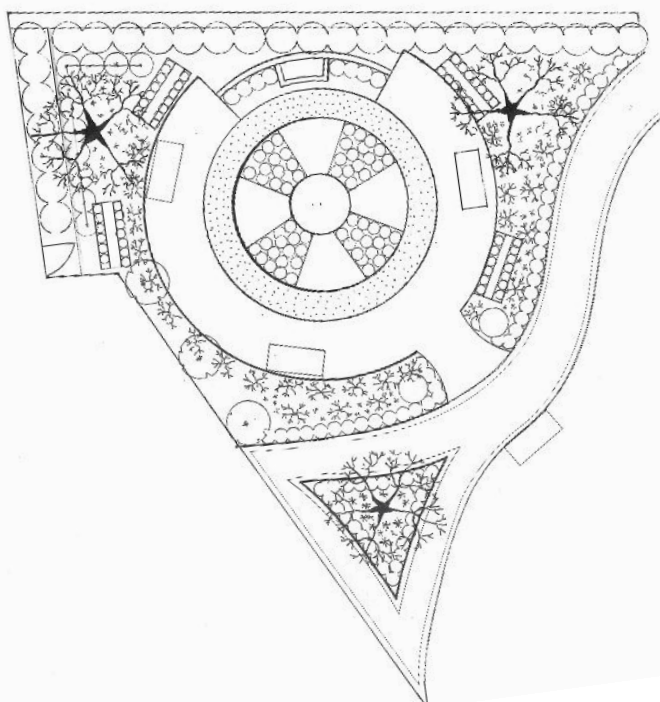
A separate area is designated for the remembrance of deceased or stillborn infants.

Purchase of in-ground space	\$ 300.00
-----------------------------	-----------

White bronze and gold plaque on Monument per interment	\$ 280.00
--	-----------

Interment of cremated remains and maintenance contribution for garden	\$ 300.00
---	-----------

Catholic prayer service donation to celebrant per interment	\$ 300.00
---	-----------



St Therese's Essendon Memorial Garden - Terms & Conditions

ALL INTERMENTS MUST BE DONE WITH PERMISSION OF THE PARISH.

ALL CREMATED REMAINS INTERRED IN THE MEMORIAL GARDEN ARE IRRETRIEVABLE.

Interment in Columbarium Urns

- Interment in Columbarium Urns is available only to genuine 'participating parishioners' who may pre-purchase one Columbarium for future use
- Each Columbarium will hold up to 3 ash interments
- All plaques will be ordered on behalf of the donor by St Therese's Parish and must follow a standard design. Some personalization of plaques is possible within the guidelines set out by St Therese's Parish
- St Therese's Parish office will be responsible for the installation of all plaques
- Cremated remains interred in St Therese's Parish Memorial Garden are irretrievable
- A request for the interment of cremated remains must be signed by the Executor of the estate or the authorized applicant for cremation
- Costs are for individual interments and are subject to change without notice

In-ground Interment of Cremated Remains

- It is possible to reserve a space in the garden for interment
- All in ground interment spaces are for one interment only
- The space allocated is in the flower garden between Columbarium 3 (St Therese's School Community) and Columbarium 4 (Noel O'Brien and Family).
- Cremated remains must be poured into the ground and cannot be buried in a receptacle.
- There will not be any ground marker to indicate the location of interment, however a plot grid will be maintained at St Therese's Parish Office.
- A request for interment of cremated remains must be signed by the Executor of the estate or the authorised applicant for cremation.
- Costs are for individual in-ground interments and are subject to change without notice.

Memorial Wall Plaque

- All plaques will be ordered on behalf of the donor by St Therese's Parish and must follow a standard design. Some personalization of plaques is possible within the guidelines set out by St Therese's Parish.
- St Therese's Parish office will be responsible for the installation of all plaques.
- It is possible to reserve a position on the wall for future use.

Garden Policy

- Visitors to the garden may leave fresh flowers only in the plastic vase/flower holders supplied
- Placement of ornaments or any artificial flower arrangements are not permitted in the garden
- Planting of any tree, shrub or plant of any kind is not permitted in the garden
- Placement of any potted plant (real or artificial) is not permitted in the garden
- St Therese's Parish is responsible for garden maintenance and will remove any plants or ornaments added to the garden without authority

Participating parishioners:

For the purposes of purchasing a columbarium in the Memorial Garden, participating parishioners must meet the following criteria.

1. At the time of purchase the person must be living within the parish boundary or be a registered parishioner, and;
2. At the time of purchase the person must have been registered with the parish for more than 10 years, and;
3. At the time of purchase the person must have regularly contributed to the parish either financially or as a volunteer.